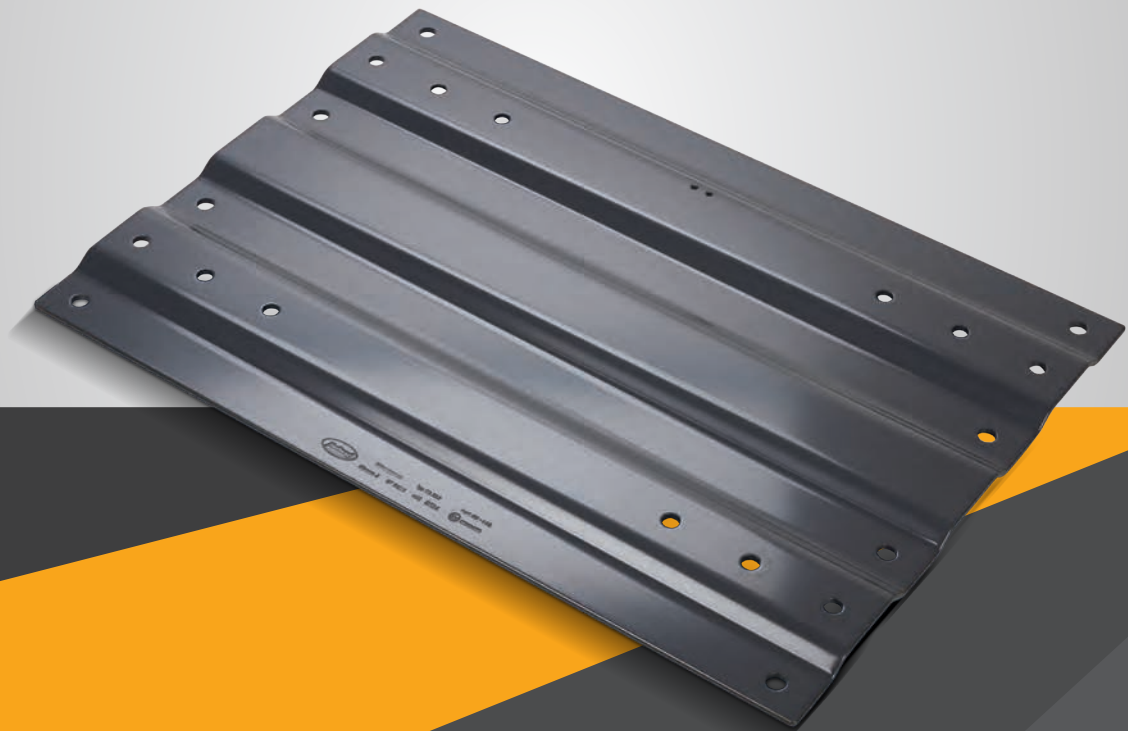


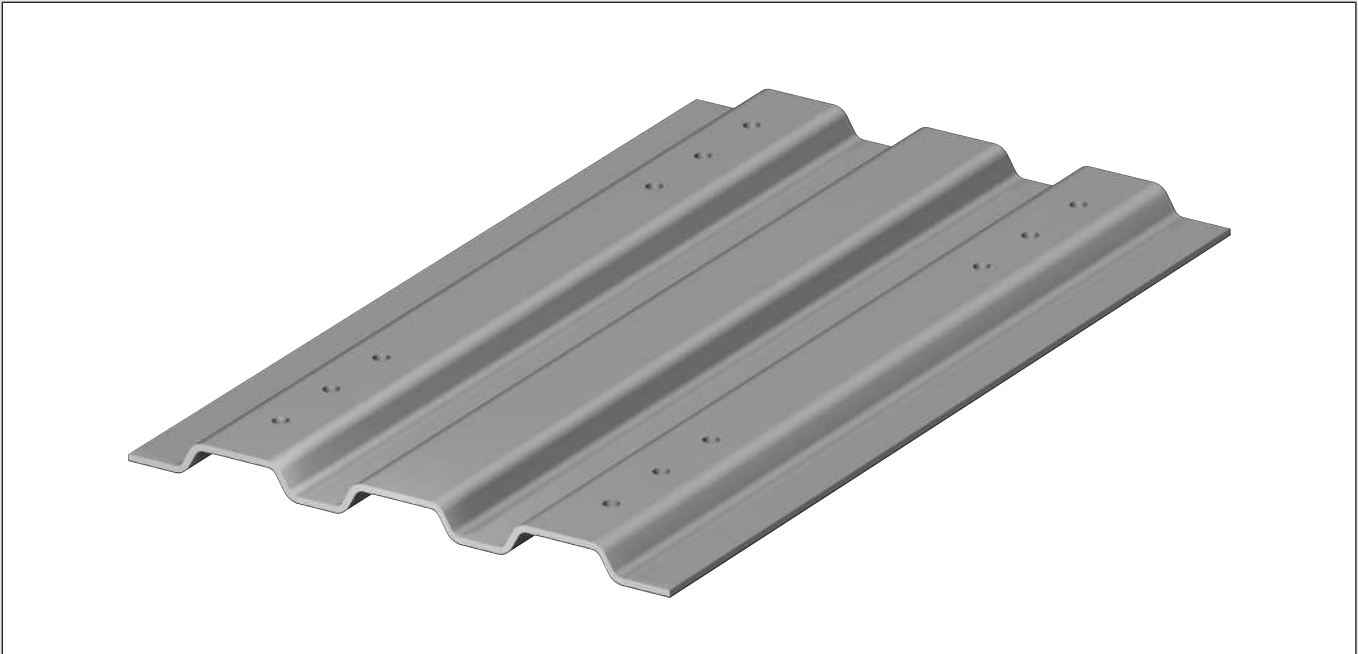
Mounting Plates

Pre-Drilled – Un-Drilled

Mounting Kits



Mounting plates without pre-drilled holes



- Made of high grade, weldable steel plate
- Approved for forced steering
- Mounting hole pattern according to DIN 74081, 74084 and ISO 3842
- Type approved

Mounting Plates without pre-drilled holes for fifth wheel up to 22 t imposed load

Mounting hole pattern according to DIN 74081 / ISO 3842

Type	Overall height [mm]	Imposed load [t]	D-value [kN]	Weight [kg]	A [mm]	B [mm]	Mounting kit SK-MP	Type approval	Order no.
MP 300	12	22	162,4	64,0	710	960	555	E11 55R-01 0379	662101300
MP 299	12	22	162,4	69,0	710	1060	555	E11 55R-01 0379	662101299
MP 644	12	22	162,4	64,0	715	960	555	E11 55R-01 0379	662101644
MP 486**	12	20	152,0	44,5	650	960	555	E11 55R-01 0953	662101486
MP 645**	12	20	152,0	51,0	715	960	555	E11 55R-01 0953	662101645
MP 549**	12	18	135,0	50,0	650	1060	555	E11 55R-01 6317	662101549
MP 648	12	22	162,4	58,0	650	960	555	E11 55R-01 0379	662101648
MP 672	12	22	162,4	64,0	650	1060	555	E11 55R-01 0379	662101672
MP 106	23	22	162,4	64,0	665	960	353	E11 55R-01 0380	662101106
MP 199	23	22	162,4	45,0	665	1060	353	E11 55R-01 0380	662101199
MP 646	23	22	162,4	48,0	765	960	353	E11 55R-01 0380	662101646
MP 060	40	22	162,4	45,0	665	960	498	E11 55R-01 0378	662101060
MP 078	40	22	162,4	49,0	665	1060	498	E11 55R-01 0378	662101078
MP 649	40	22	162,4	52,0	765	960	498	E11 55R-01 0378	662101649
MP 331**	100	16	108,0	81,0	710	970	498	E11 55R-01 0383	662101331

SK = fifth wheel, MP = mounting plate

* MP, suitable for SK-S 36.22 with an overall height of 132 mm

** MP with cut-out suitable for SK-S 36.20 with an overall height of 128 mm

For mounting widths wider than 930 mm, mounting plates of 1060 mm (B) are required.

Mounting Plates without pre-drilled holes for fifth wheel up to 36 t imposed load

Mounting hole pattern according to DIN 74084 / ISO 3842

Type	Overall height [mm]	Imposed load [t]	D-value [kN]	Weight [kg]	A [mm]	B [mm]	Mounting kit SK-MP	Type approval	Order no.
MP 301	16	36	280	84,2	710	960	553	E11 55R-01 0385	662101301
MP 302	16	36	280	94,0	710	1060	553	E11 55R-01 0385	662101302
MP 274	50	36	220	72,0	710	960	551	E11 55R-01 0387	662101274

Suitable for SK-HD 38.36 / G

Mounting plates with pre-drilled holes

The following mounting plates are already equipped with respective mounting hole patterns of the vehicle manufacturers.

Type	Overall height [mm]	OEM-Manufacturer hole pattern	Imposed load [t]	D-value [kN]	Weight [kg]	A [mm]	B [mm]	Type approval	Order no.
MP 525*	12	MAN	20	152	45	650	960	E11 55R-01 0953	662101525
MP 526*	12	Mercedes-Benz	20	152	45	650	960	E11 55R-01 0953	662101526
MP 527*	12	SCANIA	20	152	45	650	960	E11 55R-01 0953	662101527
MP 532	12	IVECO	22	162,4	63	715	960	E11 55R-01 0379	662101532
MP 544*	12	IVECO	20	152	51	715	960	E11 55R-01 0953	662101544
MP 630*	12	Renault	18	135	50	650	1060	E11 55R-01 6317	662101630
MP 631*	12	Mercedes-Benz	18	135	58	650	1010	E11 55R-01 6317	662101631
MP 594	12	SCANIA	22	162,4	58	650	960	E11 55R-01 0379	662101594
MP 577	40	SCANIA	22	162,4	54	775	960	E11 55R-01 0378	662101577
MP 440	23	SCANIA	22	162,4	41	665	960	E11 55R-01 0380	662101440
MP 574	23	MAN	22	162,4	41	665	960	E11 55R-01 0380	662101574
MP 586**	24	Mercedes-Benz	22	162,4	42,0	650	1010	E11 55R-01 0380	662101586
MP 595	23	SCANIA	22	162,4	48,0	765	960	E11 55R-01 0380	662101595
MP 441	40	SCANIA	22	162,4	45	665	960	E11 55R-01 0378	662101441
MP 596	40	SCANIA	22	162,4	52	765	960	E11 55R-01 0378	662101596
MP 632	12	Mercedes-Benz	22	162,4	61	650	1010	E11 55R-01 0379	662101632
MP 641	12	FORD	18	135	66	650	1050	E11 55R-01 6317	662101641
MP 640	12	FORD	22	162,4	69	710	1050	E11 55R-01 0379	662101640
MP 639	22	FORD	22	162,4	52	780	1050	E11 55R-01 0380	662101639
MP 638	40	FORD	22	162,4	57	780	1050	E11 55R-01 0378	662101638

* for SK-S 36.20 / overall height 128 mm (with cut-out)

** starting from Mercedes Actros MP4

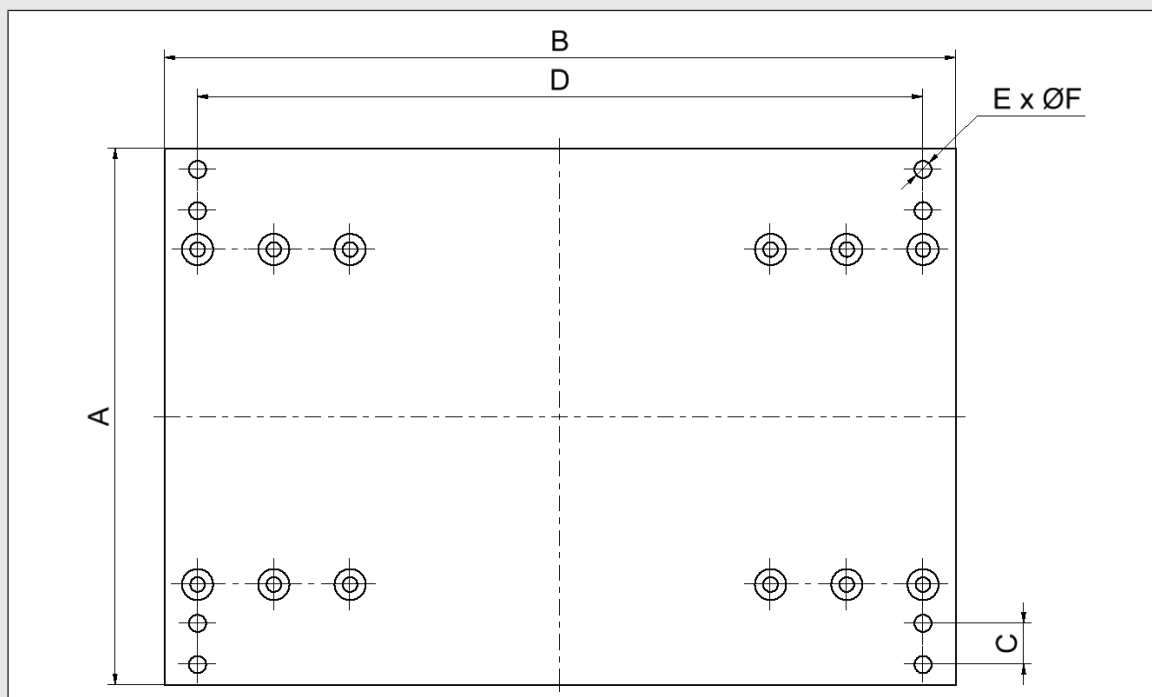
Technical Data and Useable Mounting Kits

Type	Overall height [mm]	Mounting kit SK-MP	Mounting kit MP-FHR	A [mm]	B [mm]	C [mm]	D [mm]	E [mm]	F [mm]
MP 525*	12	662101555	552	650	960	50,75	880	8	18
MP 526*	12		550	650	960	50	860	8	21
MP 527*	12		650	960	50	880	8	21	
MP 532	12		IVECO	715	960	45	860	12	19
MP 544*	12		IVECO	715	960	45	860	12	19
MP 630*	12		551	650	1060	50	940	12	18
MP 631*	12		550	650	1010	50	949	8	21
MP 594	12				650	960	50	880	8
MP 577	40			775	960	50	880	12	21
MP 440	23	662101498		665	960	50	880	8	19
MP 512	22	662101353	551	700	960	50	880	12	18
MP 574	23	662101498	552	665	960	50,75	880	8	18
MP 586	24	662101353		650	1010	50	949	8	21
MP 595	23	662101498		765	960	50	880	12	21
MP 441	40	662101353		665	960	50	880	8	19
MP 511	40	662101498	551	700	960	50	880	12	18
MP 596	40	662101498		765	960	50	880	12	21

SK = fifth wheel, MP = mounting plate, FHR = vehicle chassis

* for SK-S 36.20 / overall height 128 mm (with cut-out)

Dimensions



Mounting hole pattern according to DIN 74081

Mounting Kits

Important: SAF-HOLLAND mounting kits contain special screws and bolts which guarantee high quality and extra safe mounting of our products.

Type	Mounting	Model	Overall height [mm]	Order no.
514	SK on MP 16mm	4x (M16x50x1.5), 8x (M16x55)	16	662101514
353	SK (2") on MP	12x (M16x55x1.5) 8.8	22 - ...	662101353
498	SK (2") on MP	12x (M16x50x1.5)	24 - 150	662101498
452	SK on MP and FHR	4x (M16x50x1.5), 16x (M16x55x1.5)	12	662101452
550	MP on FHR (Mercedes-Benz Actros)	8x (M20x45x1.5)	12	662101550
551	SK (3½") on MP and FHR	12x (M16x60x1.5)	24 - ...	662101551
552	MP on FHR	8x (M16x50x1.5)	12 - 40	662101552
553	SK (3½") on MP, for MP 301, MP 302	4x (M16x60x1.5), 8x (M16x55x1.5)	16	662101553
555	SK (2") on MP	12x (M16x55x1.5)	12	662101555
556	SK on MP302 and FHR, includes 514 + 557		16	662101556
557	MP on FHR, for MP 302 (3½")	8x (M20x65x1.5)	16	662101557

SK = fifth wheel, MP = mounting plate, FHR = vehicle chassis

Mounting the fifth wheel on the mounting plate

For mounting fifth wheels as per DIN 74081, at least 8 high-tensile bolts are required, for fifth wheels as per DIN 74084, at least 12 high-tensile bolts, M16 or M16 x 1.5 of at least grade 8.8, in symmetrical order to the longitudinal and lateral axes of the fifth wheel.

Mounting the MP on the vehicle frame / angle

Install mounting plates on the vehicle according to the instructions of the vehicle manufacturer. In the absence of the vehicle manufacturer guidelines, we recommend:

For 2" fifth wheels as per DIN 74081, at least 4 high-tensile bolts, M16 x 1.5, of at least grade 8.8, or 4 high-tensile bolts, M20 x 1.5, of at least grade 8.8, on each side.

For 3½" fifth wheel as per DIN 74084, at least 6 high-tensile bolts, M16 x 1.5, of at least grade 8.8, or 4 high-tensile bolts, M20 x 1.5, of at least grade 8.8, on each side.

The mounting brackets and the mounting plate can be screwed by welded stop plates.

Tighten M16 x 1.5 bolts, of at least grade 8.8, with a torque of 190 Nm.

Tighten M20 x 1.5 bolts, of at least grade 8.8, with a torque of 350 Nm.

After assembling fifth wheels and mounting plates have to be approved by a national inspection authority.